

LM

feel the
difference

ENJOY PERIO.



UNIVERSAL CURETTES

Designed for the removal of moderate and heavy calculus from all supra- and subgingival tooth surfaces.

Instrumentation:

For calculus removal place one of the cutting edges of the universal curette against the tooth surface. Tilt the instrument toward the tooth to achieve 70° to 80° angle between the tooth and the blade. Apply lateral pressure and activate the curette by using vertical, diagonal or horizontal pull strokes. Both cutting edges of the same curette can be used by simply tilting the instrument one way or the other.



Design:

- Working end perpendicular to the lower shank
- Two cutting edges (red line)
- Rounded tip



Sharpening

Handle options:



LM ErgoSense

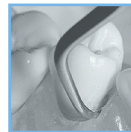


LM ErgoMax



LM ErgoNorm

McCALL



Strong blade with rigid shank.

McCall 13S-14S

- LM ErgoSense LM 222-223 ES
- LM ErgoMax LM 222-223 XSI
- LM ErgoNorm LM 222-223 SI

- For incisors and premolars



Mini McCall 13S-14S

- LM ErgoSense LM 222-223M ES
- LM ErgoMax LM 222-223M XSI
- LM ErgoNorm LM 222-223M SI

- For deep, narrow pockets
- Sharper, slightly rounded tip (not sickle-shaped)



Clinical use



Curette LM 15-16

- LM ErgoSense LM 225-226 ES
- LM ErgoMax LM 225-226 XSI
- LM ErgoNorm LM 225-226 SI

- Alternative for the McCall 13S-14S
- For removal of heavy calculus



McCall 17-18

- LM ErgoSense LM 277-278 ES
- LM ErgoMax LM 277-278 XSI
- LM ErgoNorm LM 277-278 SI

- Especially for broad molar surfaces
- Strong, uniform-width working end



McCall 17S-18S

- LM ErgoSense LM 279-280 ES
- LM ErgoMax LM 279-280 XSI
- LM ErgoNorm LM 279-280 SI

- Excellent in tight interdental spaces
- More delicate blade, working end narrower than in 17-18

LANGER

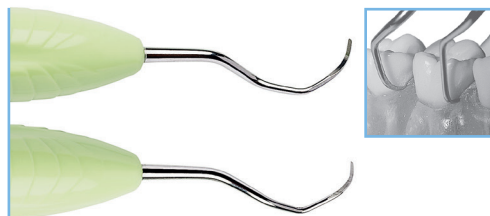
Langer curettes combine universal curette's working end with Gracey curette's shank angulation. Angulations ease access to difficult areas and both mesial and distal surfaces can be treated with the same instrument end.



Langer 1/2

- LMErgoSense LM 281-282 ES
- LMErgoMax LM 281-282 XSI
- LMErgoNorm LM 281-282 SI

- For premolars and molars in the lower jaw



Langer 3/4

- LMErgoSense LM 283-284 ES
- LMErgoMax LM 283-284 XSI
- LMErgoNorm LM 283-284 SI

- For premolars and molars in the upper jaw



Langer 5/6

- LMErgoSense LM 285-286 ES
- LMErgoMax LM 285-286 XSI
- LMErgoNorm LM 285-286 SI

- For incisors in the upper and lower jaw

MINI LANGER

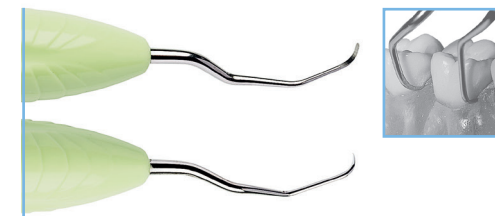
Mini Langers have longer shanks and shorter working ends than standard Langers. Useful in tight interdental spaces. Better access into tight deep pockets and furcations.



Mini Langer 1/2

- LMErgoSense LM 281-282M ES
- LMErgoMax LM 281-282M XSI
- LMErgoNorm LM 281-282M SI

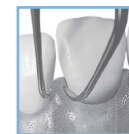
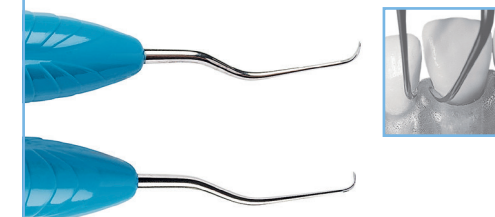
- For premolars and molars in the lower jaw



Mini Langer 3/4

- LMErgoSense LM 283-284M ES
- LMErgoMax LM 283-284M XSI
- LMErgoNorm LM 283-284M SI

- For premolars and molars in the upper jaw



Mini Langer 5/6

- LMErgoSense LM 285-286M ES
- LMErgoMax LM 285-286M XSI
- LMErgoNorm LM 285-286M SI

- For incisors in the upper and lower jaw

GOLDMAN FOX



Goldman-Fox 3

- LMErgoSense** LM 233-234 ES
- LMErgoMax** LM 233-234 XSI
- LMErgoNorm** LM 233-234 SI

- For premolars and molars

COLUMBIA



Columbia 2L-2R

- LMErgoSense** LM 217-218 ES
- LMErgoMax** LM 217-218 XSI
- LMErgoNorm** LM 217-218 SI

- For incisors and premolars



Columbia 4L-4R

- LMErgoSense** LM 219-220 ES
- LMErgoMax** LM 219-220 XSI
- LMErgoNorm** LM 219-220 SI

- For incisors, canines and premolars
- For heavier calculus

Available also as Sharp Diamond coated sharpen free LMErgoSense instrument, see page 17.



Columbia 13-14

- LMErgoSense** LM 237-238 ES
- LMErgoMax** LM 237-238 XSI
- LMErgoNorm** LM 237-238 SI

- For molars

BARNHART



Barnhart 5-6

- LMErgoSense** LM 227-228 ES
- LMErgoMax** LM 227-228 XSI

- For molars
- Shorter lower shank

Available also as Sharp Diamond coated sharpen free LMErgoSense instrument, see page 17.