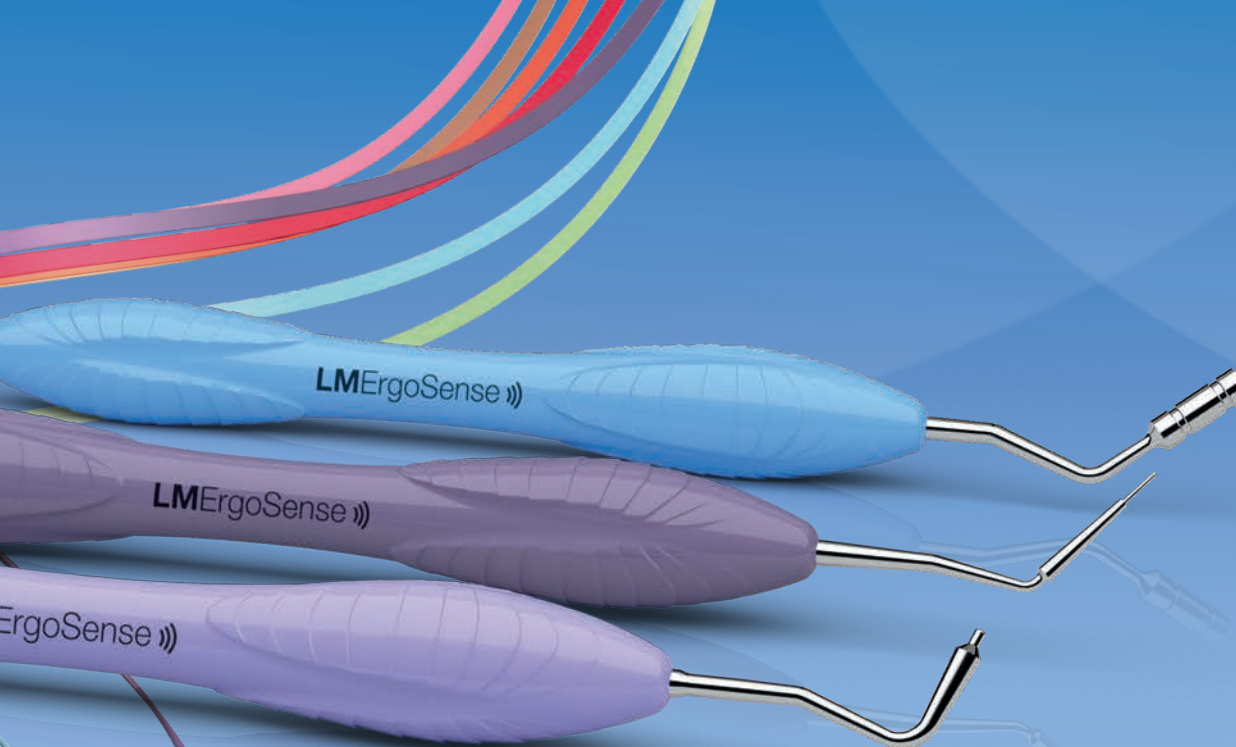


LM

feel the
difference



ENJOY
DENTISTRY.



LM Dental

Catalog | English

LM

feel the
difference



LM ErgoSense

SENSATIONAL GRIP AND UNIQUE INTELLIGENCE

Today the focus is on ergonomics – without losing sight of efficiency. The LM-ErgoSense hand instrument meets both of these requirements and is truly a unique combination of ergonomic design and integrated new technology. It is the outcome of intense research and product development in close cooperation with dental clinicians and professionals. An ergonomic, high quality hand instrument naturally feels good in the hand. Even genuinely sensational as the smart LM-ErgoSense has been described.

Rated as the best hand instrument

The value of a truly ergonomic instrument grip can never be emphasized enough as revealed in several scientific studies. A hand instrument with thick silicone handle has been found to be more usable, cause lower perceived strain and to be more productive than those with thinner handles (1). LM-ErgoSense was rated as the best in ten out of fourteen specified usability features compared with the other tested instruments in a dental scaling simulation (1). It was also ranked as the best instrument.

Most participants in the authentic scaling part of the study considered the LM-ErgoSense silicone handle as their favorite due to the enhanced grip, comfort and instrument's functional design. The participants' evaluations were based on their active use of the LM-ErgoSense in authentic clinical work. In another study focusing on ergonomics, usability characteristics and work productivity using different manufacturers' hand instruments the thick, silicone coated LM-Dental hand instruments were the most preferred choice in regard to all 18 usability criteria used in the test (2).



The story of LM-ErgoSense

Reference studies:

(1) Sormunen E., Nevala N: Evaluation of ergonomics and usability of dental scaling instruments; Dental scaling simulation and Field study, part III. Finnish Institute of Occupational Health, LM-Instruments Oy.

(2) Nevala N, Sormunen E, Remes J, Suomalainen K: Ergonomic and productivity evaluation of scaling instruments in dentistry. The Ergonomics Open Journal 2013; 6, 6-12.



Special handles



LM-ErgoMix

The LM-ErgoMix handle for exchangeable tips offers all the economical and ecological benefits of retipping.

Available for specific instruments, see page 33.

LM-ErgoSingle

Well balanced mirror handle with better reachability.

LM-ErgoMix

EM = ErgoMix handle
(Ø 12.5 mm)

LM-ErgoSingle

ESI = ErgoSingle handle
(Ø 11.5 mm)

TERMS OF WARRANTY

Limited Warranty

The following warranty terms apply to the sale of LM-Instrument Oy's products (hereinafter "Products") to a purchasing company or individual by LM-Instruments Oy (hereinafter "LM").

LM hereby warrants that the Products will be free from defects arising from faulty materials or workmanship for a period of twenty four (24) months from the date of purchase by a customer from LM's authorized dealer (hereinafter "Authorized Dealer"). The warranty period is exceptionally three (3) months for products with a life inherently shorter than 24 months due to normal wear and tear (for example tips of hand instruments, tips of ultrasonic scalers, tips of endodontic files, front surface mirrors and grinding stones of sharpening devices) and for RFID tags to dental instruments manufactured by third party manufacturer (hereinafter "Third Party").

This warranty shall not apply to Products or parts thereof;

- a) which have been subject to abuse, misuse, negligence or accident or are not connected to proper power supply;
- b) to which any modification, alteration or attachment has been made without written consent of LM;
- c) which are installed or operated violating instructions for installation, use and maintenance; or
- d) which are normally consumed in operation (for example working tips of LM-MultiHolder and strips for LM-Cello).

End-user is entitled to install RFID tags to dental instruments manufactured by Third Party. When installing RFID tags to the dental instruments manufactured by Third Party (hereinafter "Instruments"), end-user is liable to check warranty terms and product information of the Instruments to ensure that instalment does not have adverse effect to Instruments or to the terms and conditions applied between end-user and its suppliers. End-user shall install RFID tags to Instruments or get those installed by LM or other party at its own risk. LM shall not be liable for any damages accrued due to the instalment of RFID tags to Instruments. This limitation of liability does not apply in respect of damage caused by

- a) negligence of LM when installing the RFID tags to Instruments, or
- b) RFID tags defective at the time of delivery to end-user

to personal private property, or personal injury or death.

The sole and exclusive remedy under this warranty shall be limited to correct or circumvent the errors or to repair or replacement of defective parts of Products, EXW LM's factory, providing that a written claim of the defect is sent to LM within the warranty period and the original part is returned to LM's factory by the Authorized Dealer, and LM's inspection establishes the existence of such a defect.

The end customer must contact the Authorized Dealer from whom the Products were purchased to request repair or replacement under this warranty and a written claim of the defects and send the original Product to the Authorized Dealer. This warranty is void if service or repair is performed by persons not authorized by LM.

Any products not manufactured by LM, carries only such warranty, if any, as given by any manufacturer thereof.

This warranty is the LM's only warranty in respect of the Products and LM disclaims all other warranties, whether of merchantability, fitness for particular purpose or otherwise, guarantees and liabilities, express or implied, arising by law or otherwise. In no event shall LM be liable for any general, consequential or incidental damages, loss of use or loss of profits by reason of LM's negligence or otherwise in connection with the sale, delivery, installation, repair or use of the Products.

LM shall have no liability whatsoever to the Authorized Dealer or end customer or any other person for or on account of any injury, loss or damage of any kind or nature, sustained by, or any damages assessed or asserted against, or any other liability incurred by or imposed upon the handling, use, operation, maintenance or repairs of Products by anyone other than LM. This exclusion of liability does not apply pursuant to the laws on product liability in case of personal injury and property damage to privately used objects resulting from the Products.

SPOON EXCAVATORS

For the removal of softened carious dentin and temporary fillings.



Design:

- Spoon-shaped working end
- Rounded tip
- Long cutting edge, which can easily treat broader areas



Spoon Excavator, 1.0 mm

- **LMErgoSense** LM 522-523 ES
- **LMErgoMax** LM 522-523 XSI
- **LMErgoNorm** LM 522-523 SI

Spoon Excavator, 1.5 mm

- **LMErgoSense** LM 533-534 ES
- **LMErgoMax** LM 533-534 XSI
- **LMErgoNorm** LM 533-534 SI

Handle options:



LMErgoSense



LMErgoMax



LMErgoNorm

ROUND EXCAVATORS

Cariology:

- For the removal of softened, carious dentin
- For the removal of temporary fillings

Surgery:

- To sever the periodontal ligament prior to extraction
- For the removal of granulation tissue after extraction



Design:

- Round working end
- Curved cutting edge



Round Excavator, 1.0 mm

- **LMErgoSense** LM 61-62 ES
- **LMErgoMax** LM 61-62 XSI
- **LMErgoNorm** LM 61-62 SI



Round Excavator, 1.5 mm

- **LMErgoSense** LM 63-64 ES
- **LMErgoMax** LM 63-64 XSI
- **LMErgoNorm** LM 63-64 SI



Round Excavator, 2.0 mm

- **LMErgoSense** LM 65-66 ES
- **LMErgoMax** LM 65-66 XSI
- **LMErgoNorm** LM 65-66 SI

TRIPLE-ANGLED BACK ACTION EXCAVATORS

Cariology:

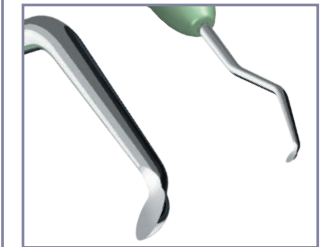
- For removing carious dentin
- For undermining enamel during tissue-saving preparations
- For the horizontal finishing of outer cavity margins

Periodontics:

- For the removal of calculus from hard to reach areas such as the lower anterior lingual surfaces
- For the depuration of concave root grooves and furcations

Surgery:

- For the removal of granulation tissue in connection with apical resections, flap operations, or extractions



Design:

- Round working end and curved cutting edge
- Shank angulations ease treatments on hard to reach buccal, distal, and lingual surfaces



The blade shank is triple-angled, allowing for "back action" functions

Triple-angled Back Action Excavator, 1.0 mm

- LMErgoSense** LM 611-621 ES
- LMErgoMax** LM 611-621 XSI
- LMErgoNorm** LM 611-621 SI



Triple-angled Back Action Excavator, 1.5 mm

- LMErgoSense** LM 631-641 ES
- LMErgoMax** LM 631-641 XSI
- LMErgoNorm** LM 631-641 SI



Triple-angled Back Action Excavator, 2.0 mm

- LMErgoSense** LM 651-661 ES
- LMErgoMax** LM 651-661 XSI
- LMErgoNorm** LM 651-661 SI



Triple-angled Back Action Excavator, 3.5 mm

- LMErgoSense** LM 671-681 ES
- LMErgoMax** LM 671-681 XSI
- LMErgoNorm** LM 671-681 SI

- For the horizontal finishing of outer cavity margins

GINGIVAL MARGIN TRIMMERS

For finishing enamel margins in the proximal area as well as for making plastic, amalgam and ceramic fillings.



Gingival Margin Trimmer, 1.2 mm, distal

- LMErgoSense** LM 121-122 ES
- LMErgoMax** LM 121-122 XSI
- LMErgoNorm** LM 121-122 SI



Gingival Margin Trimmer, 1.2 mm, mesial

- LMErgoSense** LM 125-126 ES
- LMErgoMax** LM 125-126 XSI
- LMErgoNorm** LM 125-126 SI

SPATULA

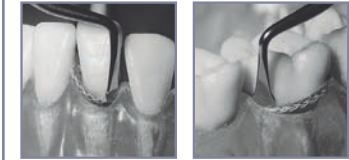


Spatula

- LMErgoSense** LM 450-460 ES
- LMErgoMax** LM 450-460 XSI
- LMErgoNorm** LM 450-460 SI

CORD PACKERS

For packing retraction cord into the gingival pocket.



The bent blade enables getting around the tooth as well as the packing of the cord using vertical motions.



Cord Packer, 2.0 mm

- LMErgoSense** LM 490-491 ES
- LMErgoMax** LM 490-491 XSI
- LMErgoNorm** LM 490-491 SI



Cord Packer, 2.6 mm

- LMErgoSense** LM 492-493 ES
- LMErgoMax** LM 492-493 XSI
- LMErgoNorm** LM 492-493 SI

BASE CARRIERS

For carrying base or thin liner to dentin surfaces.



Base Carrier, rigid

- LMErgoSense** LM 29H-30H ES
- LMErgoMax** LM 29H-30H XSI
- LMErgoNorm** LM 29H-30H SI



Base Carrier - Condenser, malleable tip

- LMErgoSense** LM 30-34 ES
- LMErgoMax** LM 30-34 XSI
- LMErgoNorm** LM 30-34 SI

- Tip (30) can be bent into the desired form, allowing for easier access to hard to reach areas



Base Carrier - Condenser, rigid

- LMErgoSense** LM 30H-34 ES
- LMErgoMax** LM 30H-34 XSI
- LMErgoNorm** LM 30H-34 SI

PLUGGERS

For packing all types of filling materials.



Plugger, cylindrical, 1.0-1.5 mm

- LMErgoSense** LM 340-360 ES
- LMErgoMax** LM 340-360 XSI
- LMErgoNorm** LM 340-360 SI



Plugger, cylindrical, 1.2-2.0 mm

- LMErgoSense** LM 350-380 ES
- LMErgoMax** LM 350-380 XSI
- LMErgoNorm** LM 350-380 SI



Plugger, cylindrical, 1.8-2.5 mm

- LMErgoSense** LM 370-390 ES
- LMErgoMax** LM 370-390 XSI
- LMErgoNorm** LM 370-390 SI

BURNISHERS

For burnishing, modelling and finishing of fillings.



Burnisher

- LMErgoSense** LM 31-32 ES
- LMErgoMax** LM 31-32 XSI
- LMErgoNorm** LM 31-32 SI

- For burnishing fillings at cavity margins
- For packing and shaping of composite fillings
- For packing of inlay-/onlay fillings

Burnisher - Plugger, ball-ended, 1.5-2.5 mm

- LMErgoSense** LM 471-473 ES
- LMErgoMax** LM 471-473 XSI
- LMErgoNorm** LM 471-473 SI

- For plugging filling into cavity
- For polishing
- For plugging and shaping of composite fillings



Burnisher 27-29

- LMErgoSense** LM 476-477 ES
- LMErgoMax** LM 476-477 XSI
- LMErgoNorm** LM 476-477 SI

- For shaping of occlusal surfaces
- For burnishing of fillings at cavity margins



Burnisher 21

- LMErgoSense** LM 372-373 ES
- LMErgoMax** LM 372-373 XSI
- LMErgoNorm** LM 372-373 SI

- For shaping and packing of composite fillings
- For shaping of occlusal surfaces before hardening
- Pits, grooves, lateral ridges

RESTORATION
- LM-ARTE



LM-Arte is a set of innovative instruments for aesthetic restorations and designed especially for composite layering. Each instrument is color-coded and named by its main function to enable easy, efficient and quick restorative treatments.

LM-Arte instruments have been developed in co-operation with Style Italiano, a study group of passionate clinicians and researchers specialized in aesthetic restorative dentistry.



Founders of Style Italiano, Walter Devoto DDS and Angelo Putignano MD, DDS.



LM-Arte Applica

- LMErgoSense** LM 46-49 ES
- LMErgoMax** LM 46-49 XSI

- A very thin and flexible spatula for transporting and modeling of the composite



LM-Arte Applica Twist

- LMErgoSense** LM 464-494 ES
- LMErgoMax** LM 464-494 XSI

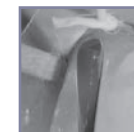
- Thin and narrow spatula with bended angles for modeling difficult to reach areas such as approximal walls or the marginal ridge in matrix



LM-Arte Modella

- LMErgoSense** LM 442-443 ES
- LMErgoMax** LM 442-443 XSI

- A very thin and flexible spatula for transporting and modeling of the composite



LM-Arte Condensa

- LMErgoSense** LM 488-489 ES
- LMErgoMax** LM 488-489 XSI

- A long and round plugger especially for modeling composite



Handle options:



LMErgoSense



LMErgoMax



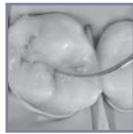
LMErgoNorm



LM-Arte Fissura

LMErgoSense LM 481-487 ES
LMErgoMax LM 481-487 XSI

- Sharp pointed tips for modeling of occlusal surface structures



LM-Arte Eccesso

LMErgoSense LM 307-308 ES
LMErgoMax LM 307-308 XSI

- For the removal of composite and bonding residue



NEW



LM-Arte Misura

LMErgoSense LM 496-497 ES
LMErgoMax LM 496-497 XSI

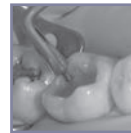
- For horizontal and vertical measuring of thickness (not plural) of composite layers on the restorations



LM-Arte Posterior Misura

LMErgoSense LM 498-499 ES
LMErgoMax LM 498-499 XSI

- For horizontal and vertical measuring of thickness of composite layers on the posterior restorations
- The fork shaped tip allows measuring and modeling of the composite wall with the presence of a matrix



LM-Arte Set

LMErgoSense LM 6840 ES
LMErgoMax LM 6840 XSI

- Includes:
 LM-Arte Applica, LM-Arte Condensa, LM-Arte Fissura, LM-Arte Misura, LM-Arte Eccesso, LM-Servo 5 cassette

LM-GENGIVA



Gingival retracting kit

LMErgoSense LM 7556K ES
LMErgoMax LM 7556K XSI

Includes products:

- LM-Gingiva / LM-MultiHolder PK III hand instrument
- See more on page 44

LM-Gingival Retractors (blue)

- For establishing optimum working conditions for procedures at the gum line.
- Assortment package of three sizes (ca 90 pieces, 30 pcs/size):
 - S for incisors
 - M for premolars
 - XL for molars
- See more on page 45

LM-MultiLever

- For the removal of disposable gingival retractors

RESTORATION – DARK DIAMOND COATED INSTRUMENTS

LM-ErgoSense Dark Diamond instruments with non-stick coating for easy placing and contouring of composite resins. The diamond like coating reduces the stickiness and allows for pleasant and precise restorative instrumentation.

Dark Diamond features:

- Exclusive diamond like coating
- Hard surface
- Smooth surface
- Dark color coating
- LM-ErgoSense handle

Benefits:

- Non-stick placement and sculpting of the composite resin
- Not sensitive to scratches
- Easy to clean
- Maximum contrast against the filling & minimal reflections
- Extreme precision and feel



Dark Diamond instruments can be cleaned and sterilized similarly to all other LM instruments.

Dark Diamond coating makes the surface of the tip extremely smooth and hard and allows for non-stick application and modeling of composite.

LMErgoSense
DARK DIAMOND



Burnisher

LMErgoSense LM 31-32DD ES

- Dark Diamond non-stick coating
- For packing and modeling composite



Burnisher - Plugger, ball-ended, 1.5-2.5 mm

LMErgoSense LM 471-473DD ES

- Dark Diamond non-stick coating
- For modeling composite



Modeller MH

LMErgoSense LM 708-709DD ES

- Dark Diamond non-stick coating
- For packing large approximal fillings
- Cylinder shaped working end will not get stuck into the composite while light curing



Modeller MH Mini

LMErgoSense LM 707-708DD ES

- Dark Diamond non-stick coating
- For packing small and medium approximal fillings
- Cylinder shaped working end will not get stuck into the composite while light curing



Packer-Modeller IO

LMErgoSense LM 482-483DD ES

- Dark Diamond non-stick coating
- For packing and modeling composite
- Conical working ends optimal for shaping occlusal surfaces



Plastic instrument, anterior

LMErgoSense LM 43-47DD ES

- Dark Diamond non-stick coating
- For placing, packing and contouring composite



Plastic instrument, posterior

LMErgoSense LM 48-702DD ES

- Dark Diamond non-stick coating
- For placing, packing and contouring composite



Mini Spatula

LMErgoSense LM 444-445DD ES

- Dark Diamond non-stick coating
- For placing and contouring composite

Handle options:



LMErgoSense



LMErgoMax



LMErgoNorm

FOR COMPOSITES



Flow Instrument IO

LMErgoSense LM 484-485 ES

LMErgoMax LM 484-485 XSI

- For easy handling and shaping of flowable composites



Modeller MH

LMErgoSense LM 708-709 ES

LMErgoMax LM 708-709 XSI

- For packing large, approximal fillings in several layers
- Cylinder shaped working ends won't get stuck into the composite while light curing
- For pressing the matrix band in place while curing



Modeller MH Mini

LMErgoSense LM 707-708 ES

LMErgoMax LM 707-708 XSI

- For packing small or medium approximal fillings in several layers
- Cylinder shaped working ends won't get stuck into the composite while light curing
- For pressing the matrix band in place while curing



Packer-Modeller IO p

LMErgoSense LM 482-702 ES

LMErgoMax LM 482-702 XSI

- **LMErgoNorm** LM 482-702 SI
- Combination instrument for premolars

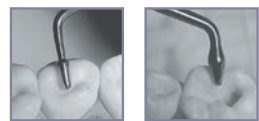


Packer-Modeller IO

LMErgoSense LM 482-483 ES

LMErgoMax LM 482-483 XSI

- **LMErgoNorm** LM 482-483 SI
- Conical working ends, which are exceptionally well-suited e.g. to shaping of occlusal surfaces and to packing of all kinds of plastics
- Composites do not stick to the highly polished blades



Packer-Modeller IO m

LMErgoSense LM 483-703 ES

LMErgoMax LM 483-703 XSI

- **LMErgoNorm** LM 483-703 SI
- Combination instrument for molars



Plastic Instrument, anterior

LMErgoSense LM 43-47 ES

LMErgoMax LM 43-47 XSI

- **LMErgoNorm** LM 43-47 SI
- For placing, packing and contouring composite



Plastic Instrument, posterior

LMErgoSense LM 48-702 ES

LMErgoMax LM 48-702 XSI

- **LMErgoNorm** LM 48-702 SI
- For placing, packing and contouring composite



Form Condenser, 1.5-2.5 mm

LMErgoSense LM 702-703 ES

LMErgoMax LM 702-703 XSI

- **LMErgoNorm** LM 702-703 SI
- For shaping and packing of large filling surfaces



Composite Spatula 6

LMErgoSense LM 446-447 ES

LMErgoMax LM 446-447 XSI

- **LMErgoNorm** LM 446-447 SI
- For placing and contouring composite



Mini Spatula

LMErgoSense LM 444-445 ES

LMErgoMax LM 444-445 XSI

- **LMErgoNorm** LM 444-445 SI
- For placing and contouring composite

CARVERS

For shaping of filling material to fit the anatomy of tooth, and for removal of soft excess.



1/2 Hollenback

LMErgoSense LM 741-751 ES

LMErgoMax LM 741-751 XSI

LMErgoNorm LM 741-751 SI

- For proximal and cervical surfaces



Nystrom I

LMErgoSense LM 74-75 ES

LMErgoMax LM 74-75 XSI

LMErgoNorm LM 74-75 SI

- For proximal and occlusal surfaces



Nystrom III

LMErgoSense LM 76-77 ES

LMErgoMax LM 76-77 XSI

LMErgoNorm LM 76-77 SI

- For interdental spaces, contact surfaces



Maehlum

- LMErgoSense** LM 71-73 ES
- LMErgoMax** LM 71-73 XSI
- LMErgoNorm** LM 71-73 SI

- For removal of soft excess from gingival margins (71)
- For anatomical shaping of occlusal surfaces (73)



Universal Carver, occlusal-proximal

- LMErgoSense** LM 71-72 ES
- LMErgoMax** LM 71-72 XSI
- LMErgoNorm** LM 71-72 SI

- For removal of soft excess from gingival margins (71)
- For anatomical shaping of occlusal surfaces (72)



Cleoid-Discoïd

- LMErgoSense** LM 731-732 ES
- LMErgoMax** LM 731-732 XSI
- LMErgoNorm** LM 731-732 SI

- For anatomical shaping of occlusal surfaces of small fillings

EXCESS SCALERS



Excess Scaler

- LMErgoSense** LM 785-795 ES
- LMErgoMax** LM 785-795 XSI
- LMErgoNorm** LM 785-795 SI

- For the removal of adhesive, cement, and composite excesses



Mini Excess Scaler

- LMErgoSense** LM 784-794 ES
- LMErgoMax** LM 784-794 XSI
- LMErgoNorm** LM 784-794 SI

- An effective excess remover in extremely tight interdental spaces

FILLING REMOVER



Filling Remover

- LMErgoSense** LM 764-766 ES
- LMErgoMax** LM 764-766 XSI
- LMErgoNorm** LM 764-766 SI

- For the removal of temporary fillings and crowns
- For bridge removal during fitting

CROWN OFF



A groove is first burred from the lower edge of the crown up to the occlusal surface. The groove should be so deep that it reaches the cement. The Crown Off working end is placed longitudinally into the groove and turned as if spreading the groove. The blade is turned until the crown loosens and lifts up. The blade stays firmly in the groove and it is easy to control even when lot of force is used.



Crown Off

- LMErgoSense** LM 767-768 ES
- LMErgoMax** LM 767-768 XSI

- Blade double angled with a 45° twist
- Can be used for all types of levering and removing in the mouth

INSTRUMENT SET



LM-CompoSet

- LMErgoSense** LM 6657 ES
- LMErgoMax** LM 6657 XSI

- Includes:
- LM-Servo 5 cassette, Mini Spatula, Plastic instrument, ant., Form Condenser, Packer-Modeller IO, Mini Excess Scaler

LM-CELLO STRIPHOLDER

Prophylactics:

- The removal of calculus from contact areas
- Preparation for flossing and toothpick use
- When finishing proximal surfaces, the strip can serve as a toothpaste applicator

Restoration:

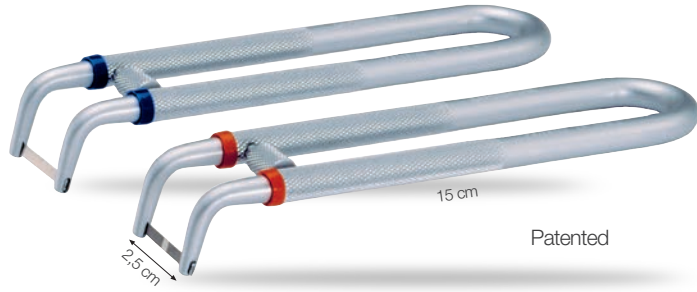
- The finishing of proximal and contact surfaces
- Preparation for both rubber dam and matrix techniques

Esthetic and prosthetic care:

- The finishing of cement seams on laminates, cast fillings, and crowns

Orthodontics:

- Enamel stripping



LM-Cello stripholder
LM 2010 C

- Includes a sample for each strip (6 pcs).

Strip selection

package 50 pcs, coarseness 60µm

- Use the LM code rings to mark pre-fitted strips for mesial (orange) or distal (blue) surfaces.

Strips with blanks

- The smooth part of the strip is used when the contact is exceptionally tight



LM 5502
- One-sided, width 2 mm, thickness 0,12 mm



LM 5503
- One-sided, width 3 mm, thickness 0,12 mm



LM 5503D
- Double-sided, width 3 mm, thickness 0,18 mm

Strips without blanks



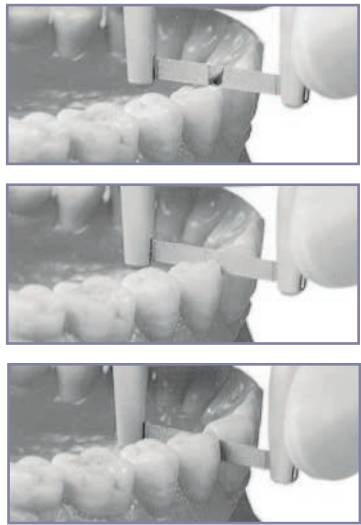
LM 5512
- One-sided, width 2 mm, thickness 0,12 mm



LM 5513
- One-sided, width 3 mm, thickness 0,12 mm



LM 5513D
- Double-sided, width 3 mm, thickness 0,18 mm



LM-MULTIHOLDER SYSTEM

LM-MultiHolder instruments and different kinds of replaceable plastic working ends – a real multi-function instrument!

- Angle options allow for easy access to even the more complex areas
- Optimal combination of steel and plastic – the steel shank is rigid and only the working end will flex, when required



LM-MultiHolder PK I

- LMErgoSense LM 750-756 ES
- LMErgoMax LM 750-756 XSI
- LMErgoNorm LM 750-756 SI



LM-MultiHolder PK II

- LMErgoSense LM 752-754 ES
- LMErgoMax LM 752-754 XSI
- LMErgoNorm LM 752-754 SI



LM-MultiHolder PK III

- LMErgoSense LM 752-756 ES
- LMErgoMax LM 752-756 XSI

- Part of the Gengiva concept by Style Italiano, see page 39

Handle options:

- LMErgoSense
- LMErgoMax
- LMErgoNorm

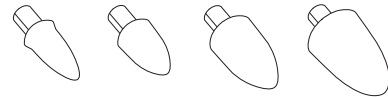
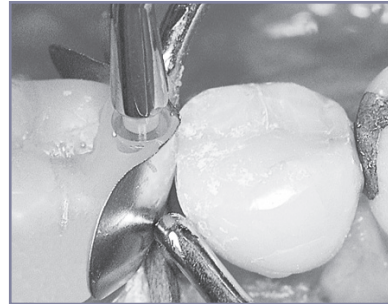
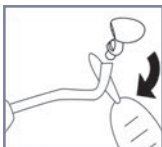
WORKING ENDS FOR LM-MULTIHOLDER



LM-MultiLever

LM 7550

- For the removal of plastic working end



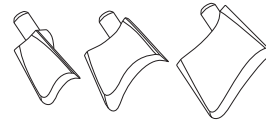
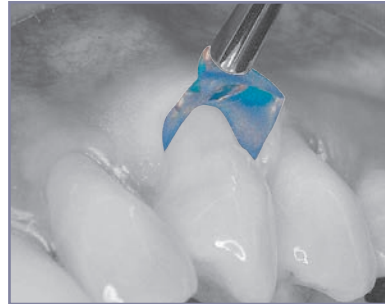
LM-Contact Formers

Transparent tip for making correctly formed and tight approximal contact.

- Suitable for use with all matrices
- Will not stick to composite fillings
- Disposable

Four sizes corresponding to the size of the cavity, circa 60 pcs / package

- LM 7622 XS
- LM 7624 S
- LM 7626 M
- LM 7628 L
- LM 7620 Assortment package circa 120 pcs (30 pcs / size)



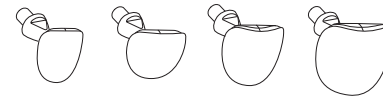
LM-Gingival Retractors (blue)

For establishing optimum working conditions for procedures at the gum line.

- Disposable

Three sizes, circa 60 pcs / package

- LM 7502 S for incisors
- LM 7504 M for premolars
- LM 7506 XL for molars
- LM 7500 Assortment package circa 90 pcs (30 pcs / size)



LM-Cervical Matrices

For making anatomically correct fillings at the gum line.

- Protects from moisture
- Prevents air bubbles
- Disposable

Four models for different size and shape, circa 60 pcs / package

- LM 7602 for incisors
- LM 7604 for canines and premolars
- LM 7606 for small molars
- LM 7608 for large molars
- LM 7600 Assortment package circa 120 pcs (30 pcs / size)



LM-MultiHolder IntroKit

Introkit contains LM-MultiHolder instruments PK I and PK II (XSI or ES), MultiLever and samples of all available working ends.

There are a total of 44 working ends, 4 for each size of each working end.

LM 7555K ES
LM 7555K XSI

- You may order LM-MultiHolder IntroKit sample package also separately: LM 7555