

The logo consists of the letters 'LM' in a white, bold, sans-serif font, centered within a dark blue rectangular background.

feel the
difference

A purple dental handpiece with a textured grip and a curved metal shaft ending in a sharp hook. A bright starburst light is positioned at the tip of the hook.

LMSharpDiamond

SHARPEN FREE
MICRO COATING




Enjoy Sharpen Free Prophylaxis & Perio



LMSharpDiamond

LM Sharp Diamond™ instruments with multi-layered micro membrane coating offer unique benefits:

SHARPEN FREE



Savings of time & money

Highest rated ergonomics with sensational grip*

Long-lasting superior sharpness

Improved productivity & clinical results



LM-ErgoSense instruments can be integrated with an advanced RFID chip that can be scanned and registered with the unique LM Dental Tracking System™. Complete traceability improves patient safety and enhances material management

* (1) Sormunen E., Nevala N: Evaluation of ergonomics and usability of dental scaling instruments; Dental scaling simulation and Field study, part III. Finnish Institute of Occupational Health, LM-Instruments Oy. (2) Nevala N, Sormunen E, Remes J, Suomalainen K: Ergonomic and productivity evaluation of scaling instruments in dentistry. The Ergonomics Open Journal 2013; 6, 6-12.

Sharpen Free Micro Coating

LM

feel the
difference

LMSharpDiamond

- Multi layered micro membrane coating made using the most advanced PVD (Physical Vapor Deposition) technology
- The coating gives LM Sharp Diamond™ instruments maximal wear resistance and excellent hardness
- The coating process does not dull the cutting edge
- Completely nickel free
- Researched by Aalto University, Department of Materials Science and Engineering in Finland



Hardness

LM

feel the
difference

LMSharpDiamond

HARDNESS

Hardness contributes to the durability of the instrument. Sharp Diamond reach hardness of over 63 on Rockwell scale.



- A hard instrument is highly resistant to wear
- LM Sharp Diamond™ has the highest hardness of all coated hand instruments on the market today

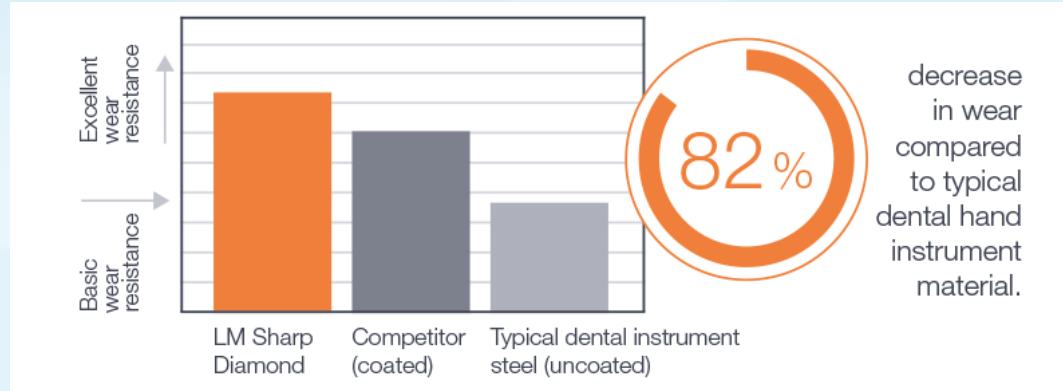


Wear Resistance

LM

feel the
difference

LMSharpDiamond



According to a comparative study made by Aalto university** the LM Sharp Diamond™ had the best wear resistance.



** Leppänen J. et al: The influence of PVD coatings on the wear performance of steel dental currettes. Key Engineering Materials Vol. 674 (2016), 289-295.

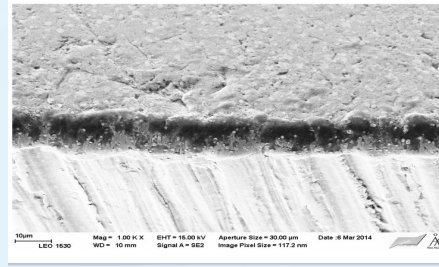
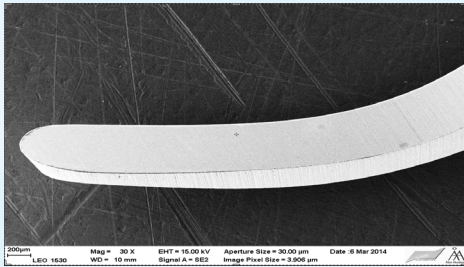
Wear Resistance

LM

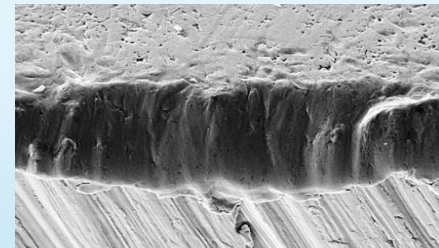
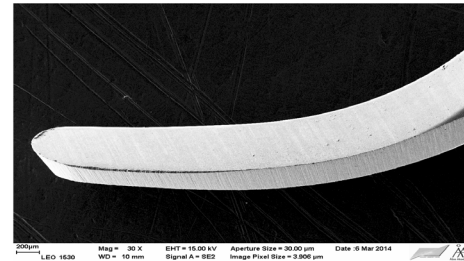
feel the difference

Cutting edge of the LM Sharp Diamond™ curette and the magnification of the edge after the test.

LMSharpDiamond



Cutting edge of an typical non-coated curette and the magnification of the edge after the test.



*** Leppäniemi J. et al: The influence of PVD coatings on the wear performance of steel dental curettes.

Key Engineering Materials Vol. 674 (2016), 289-295.



LM ErgoSense

Best in Clinical Test



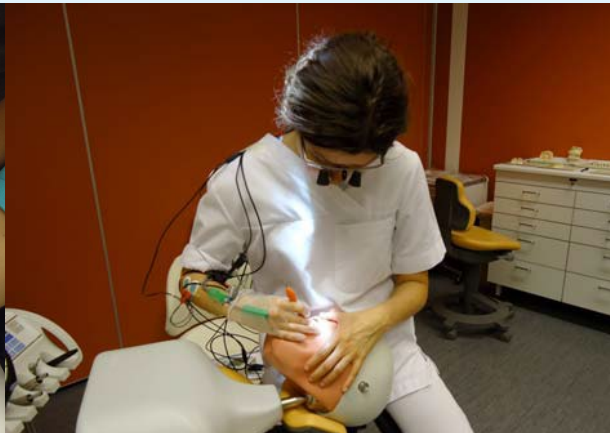
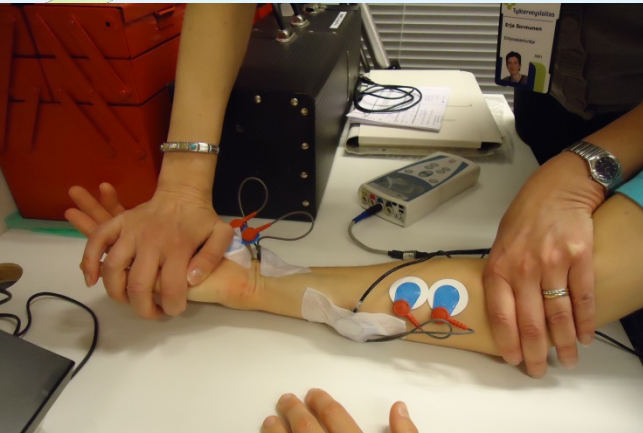
Comparative study made by the Finnish Institute of the Occupational Health

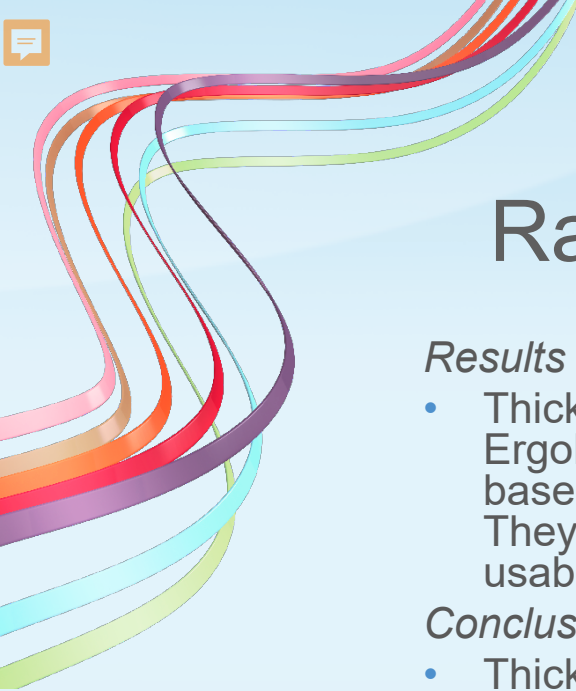
- 5 cures (GRA 11-12) and 5 restorative instruments were tested by dental clinicians at the University of Helsinki
- Handle types by different manufacturers: LM-ErgoSense (prototype), LM-ErgoMax, Hu-Friedy (both thin and thicker handle in metal), American Eagle (handle in plastic)
- Ergonomy of the instruments was evaluated by measuring the musculoskeletal strain and postures of the upper limbs
- Also the work productivity was measured
- Subjective analysis of the usability, personal preferences and sensations of musculoskeletal strain



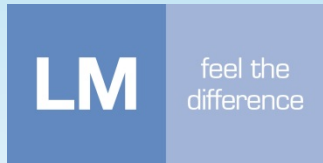
LM ErgoSense Measurements in Clinical Test

- Scientific comparative study by FIOH (Finnish Institute of Occupational Health)
- Ergonomy of the instruments was evaluated by measuring the musculoskeletal strain and postures of the upper limbs





LM ErgoSense Rated Best By Clinicians



Results

- Thick, silicone coated instruments (LM-ErgoSense ja LM-ErgoMax) were rated as best periodontal instruments based on the usability characteristics and work productivity. They were the most preferred choice in regard to all 18 usability criteria used in the test.

Conclusions

- Thick, silicone coated hand instruments (diameter 12-14 mm) were best in regard to usability and work productivity. They caused lowest perceived strain in both the fingers and palm and the thumb than those with thinner instruments in plastic or metal.

Published in Ergonomics Open Journal 6/2013



<https://vimeo.com/171557666>



LMSharpDiamond



LM

feel the
difference

LM Dual Gracey™

New in Sharp Diamond range



LMDual Gracey™

Combining the benefits of universal curette and Gracey curette in one

LM

feel the difference



SIMPLY CLEVER

LM Dual Graceys™

- The original LM Dual Gracey™ curette, a combination of universal curette and Gracey 11/12 and Gracey 13/14 curettes
- For removal of supra and subgingival calculus in premolar and molar areas
- For all tooth surfaces
- Mini model is excellent in narrow and deep pockets



Syntette™ SD

LM ErgoSense

LM 215-216SD ES



Mini Syntette™ SD

LM ErgoSense

LM 215-216MSD ES

NEW

- New Syntette™ Anterior is completing the set of LM Dual Graceys™
- A combination of universal curette and Gracey 1/2 and Gracey 7/8 curettes
- For removal of supra and subgingival calculus in premolar and anterior areas
- For all tooth surfaces
- Mini model is excellent in narrow and deep pockets



Syntette™ Anterior SD

LM ErgoSense

LM 275-276SD ES



Mini Syntette™ Anterior SD

LM ErgoSense

LM 275-276MSD ES

LM

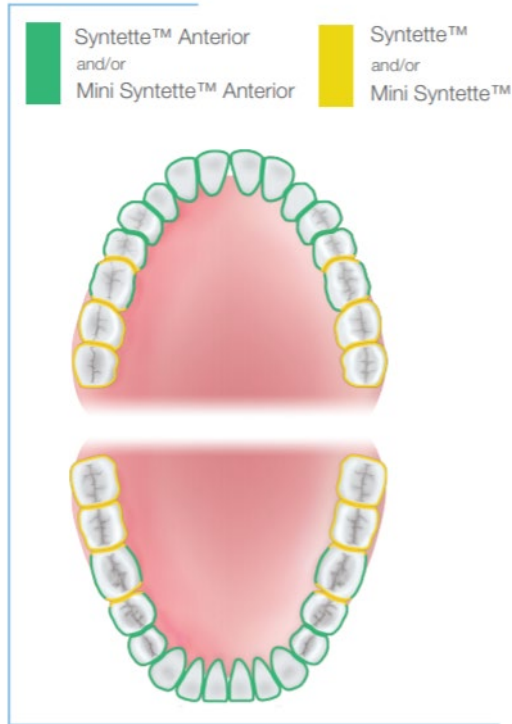
feel the
difference



LMDual Gracey™



Recommendation for optimal treatment



See the video on clinical use

Sharpen free instruments



Sickle Scalars

NEW

The new LM-SharpJack instrument features extra long, thin blades for convenient interproximal access presenting the most popular scaler design in US. The shank is optimally angled to universally adapt in anterior and posterior regions.

LM-SharpJack SD

- Anterior/posterior scaler
- Thin dual-edged blades for easy and efficient interproximal access

LMErgoSense

LM 315-316SD ES



Scan the QR for more info & video at www.lm-dental.com/SharpJack



NEW

Scaler LM Nebraska 128 SD

- Instrument for the anterior interproximals

LMErgoSense

LM 128-128SD ES



Micro Sickle SD

- Anterior/posterior scaler
- Delicate working end
- Elongated shank
- Ideal for tight interproximal surfaces

LMErgoSense

LM 301-302SD ES



Mini Sickle SD

- Universal scaler
- For all tooth surfaces
- Fine, slightly angled blade

LMErgoSense

LM 311-312SD ES



Sickle LM23 SD

- Posterior scaler
- Shorter blades and longer lower shank than in Mini Sickle

LMErgoSense

LM 313-314SD ES



Scaler H6-H7 SD

- For all tooth surfaces
- Longer shank and smaller lateral bending than in LM-SharpJack

LMErgoSense

LM 146-147SD ES

Universal Curettes



Columbia 4L-4R SD

- For incisors, canines and premolars
- For heavier calculus

LMErgoSense

LM 219-220SD ES



Barnhart 5-6 SD

- For molars
- Shorter lower shank

LMErgoSense

LM 227-228SD ES

LM

feel the difference

LM-SharpJack - Purple Propphy & Perio

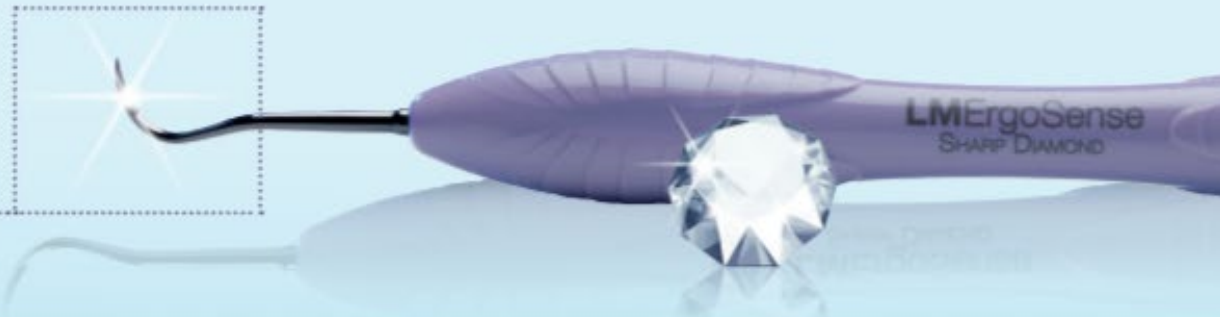
LM

feel the
difference

“ **LMSharpJack** - what a great instrument!

*It has the best features you could wish for.
It's very narrow and thin which allows you to
enter everywhere, even in the smallest areas.
Perfect that the tip is so long so you can
get in between molars. My favorite without
competition, I'm in love!”*

Malin, Registered Dental Hygienist, Sweden



Gracey Currettes

- For incisors and premolars



Gracey 1/2 SD

LMErgoSense

LM 201-202SD ES



Mini Gracey 1/2 SD

LMErgoSense

LM 201-202MSD ES

- For premolars and molars
- For buccal and lingual surfaces



Gracey 7/8 SD

LMErgoSense

LM 207-208SD ES



Mini Gracey 7/8 SD

LMErgoSense

LM 207-208MSD ES

- For premolars and molars
- For mesial surfaces



Gracey 11/12 SD

LMErgoSense

LM 211-212SD ES



Mini Gracey 11/12 SD

LMErgoSense

LM 211-212MSD ES

- For premolars and molars
- For distal surfaces



Gracey 13/14 SD

LMErgoSense

LM 213-214SD ES



Mini Gracey 13/14 SD

LMErgoSense

LM 213-214MSD ES



Mini Gracey 15/16 SD

LMErgoSense

LM 245-246MSD ES

- For molars' mesial surfaces
- Blade shank more sharply angled than Mini Gracey 11/12 for better access



Mini Gracey 17/18 SD

LMErgoSense

LM 247-248MSD ES

- For molars' distal surfaces
- Blade shank more sharply angled than in Mini Gracey 13/14 for better access

“

It's great that I don't need to waste my time on sharpening any longer! Since the LM Sharp Diamond™ instruments are totally sharpen free, I can concentrate on the clinical work. I can remove calculus with controlled strokes using extremely light grip. The long-lasting sharpness really makes a difference!”



Anna, Registered Dental Hygienist, USA

LM

feel the difference