

# PERIODONTICS

Gracey curettes



## GRACEY CURETTES

Area specific curettes for the removal of deep subgingival calculus. For the finishing of subgingival root surfaces.



### Design:

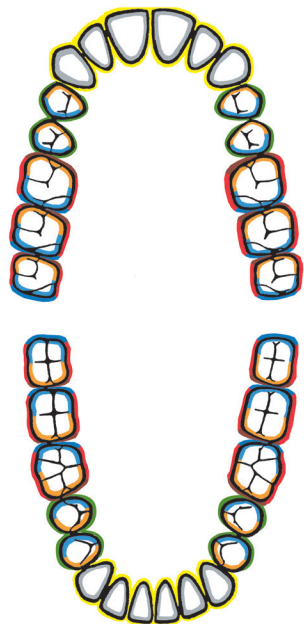
- Working surface inclined 20° to the lower shank
- One curved cutting edge (red line)
- Rounded cutting tip



### Instrumentation:

Place the tip third or half of the cutting edge of a Gracey curette against the tooth surface. The larger outer curve is always the cutting edge. Make sure that the lower shank is parallel with the tooth surface. For calculus removal apply moderate and for root planing light lateral pressure and activate the curette by using vertical, diagonal or horizontal pull strokes.

### Area specific indications for Gracey curettes



#### Incisors

All surfaces



#### Premolars and molars

Buccal-lingual



Mesial

Distal

## STANDARD AND MINI GRACEY

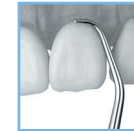
Mini Gracey has longer lower shank and smaller working end than in the standard model. Functions well in deep narrow pockets.



Gracey 1/2

- For incisors and premolars

- LMErgoSense® LM 201-202 ES
- LM 201-202 EST
- LMErgoMax™ LM 201-202 XSI
- LMErgoNorm™ LM 201-202 SI



Mini Gracey 1/2

- For incisors and premolars

- LMErgoSense® LM 201-202M ES
- LM 201-202M EST
- LMErgoMax™ LM 201-202M XSI
- LMErgoNorm™ LM 201-202M SI



With sharpen free LM Sharp Diamond™ coated tips:

- LMErgoSense® LM 201-202SD ES
- LM 201-202SD EST



With sharpen free LM Sharp Diamond™ coated tips:

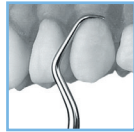
- LMErgoSense® LM 201-202MSD ES
- LM 201-202MSD EST



Gracey 3/4

- For incisors and premolars

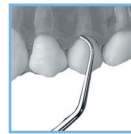
- LMErgoSense®** LM 203-204 ES
- LM 203-204 EST**
- LMErgoMax™** LM 203-204 XSI
- LMErgoNorm™** LM 203-204 SI



Gracey 5/6

- For incisors and premolars
- Especially useful in proximal surfaces

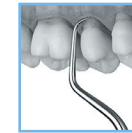
- LMErgoSense®** LM 205-206 ES
- LM 205-206 EST**
- LMErgoMax™** LM 205-206 XSI
- LMErgoNorm™** LM 205-206 SI



Gracey 7/8

- For premolars and molars
- For buccal, mesial and lingual surfaces

- LMErgoSense®** LM 207-208 ES
- LM 207-208 EST**
- LMErgoMax™** LM 207-208 XSI
- LMErgoNorm™** LM 207-208 SI



Mini Gracey 7/8

- For premolars and molars
- For buccal, mesial and lingual surfaces

- LMErgoSense®** LM 207-208M ES
- LM 207-208M EST**
- LMErgoMax™** LM 207-208M XSI
- LMErgoNorm™** LM 207-208M SI



Gracey P3-P4

- Short shank makes the instrument more rigid

- LMErgoSense®** LM 266-267 ES
- LM 266-267 EST**
- LMErgoMax™** LM 266-267 XSI
- LMErgoNorm™** LM 266-267 SI



Gracey 9/10

- For molars' buccal and lingual surfaces using horizontal technique

- LMErgoSense®** LM 209-210 ES
- LM 209-210 EST**
- LMErgoMax™** LM 209-210 XSI
- LMErgoNorm™** LM 209-210 SI



With sharpen free LM Sharp Diamond™ coated tips:

- LMErgoSense®** LM 207-208SD ES
- LM 207-208SD EST**



With sharpen free LM Sharp Diamond™ coated tips:

- LMErgoSense®** LM 207-208MSD ES
- LM 207-208MSD EST**



### Gracey 11/12

- For premolars' and molars' mesial surfaces'



- LMErgoSense®** LM 211-212 ES
- LM 211-212 EST**
- LMErgoMax™** LM 211-212 XSI
- LMErgoNorm™** LM 211-212 SI



### Mini Gracey 11/12

- For premolars' and molars' mesial surfaces'

- LMErgoSense®** LM 211-212M ES
- LM 211-212M EST**
- LMErgoMax™** LM 211-212M XSI
- LMErgoNorm™** LM 211-212M SI



### Gracey 13/14

- For premolars' and molars' distal surfaces



- LMErgoSense®** LM 213-214 ES
- LM 213-214 EST**
- LMErgoMax™** LM 213-214 XSI
- LMErgoNorm™** LM 213-214 SI



### Mini Gracey 13/14

- For premolars' and molars' distal surfaces

- LMErgoSense®** LM 213-214M ES
- LM 213-214M EST**
- LMErgoMax™** LM 213-214M XSI
- LMErgoNorm™** LM 213-214M SI

#### TOP FAVORITE



With sharpen free LM Sharp Diamond™ coated tips:

- LMErgoSense®** LM 211-212SD ES
- LM 211-212SD EST**



With sharpen free LM Sharp Diamond™ coated tips:

- LMErgoSense®** LM 211-212MSD ES
- LM 211-212MSD EST**

#### TOP FAVORITE



With sharpen free LM Sharp Diamond™ coated tips:

- LMErgoSense®** LM 213-214SD ES
- LM 213-214SD EST**



With sharpen free LM Sharp Diamond™ coated tips:

- LMErgoSense®** LM 213-214MSD ES
- LM 213-214MSD EST**



### Gracey 15/16

- For molars' mesial surfaces
- Blade shank more sharply angulated than in Gracey 11/12 for better access

- LMErgoSense®** LM 245-246 ES
- LM 245-246 EST**
- LMErgoMax™** LM 245-246 XSI
- LMErgoNorm™** LM 245-246 SI



### Mini Gracey 15/16

- Blade shank more sharply angulated than in Mini Gracey 11/12 for better access

- LMErgoSense®** LM 245-246M ES
- LM 245-246M EST**
- LMErgoMax™** LM 245-246M XSI
- LMErgoNorm™** LM 245-246M SI



With sharpen free LM Sharp Diamond™ coated tips:

- LMErgoSense®** LM 245-246MSD ES
- LM 245-246MSD EST**



### Gracey 17/18

- For molars' distal surfaces
- Blade shank more sharply angulated than in Gracey 13/14 for better access

- LMErgoSense®** LM 247-248 ES
- LM 247-248 EST**
- LMErgoMax™** LM 247-248 XSI
- LMErgoNorm™** LM 247-248 SI



### Mini Gracey 17/18

- Blade shank more sharply angulated than in Mini Gracey 13/14 for better access

- LMErgoSense®** LM 247-248M ES
- LM 247-248M EST**
- LMErgoMax™** LM 247-248M XSI
- LMErgoNorm™** LM 247-248M SI



With sharpen free LM Sharp Diamond™ coated tips:

- LMErgoSense®** LM 247-248MSD ES
- LM 247-248MSD EST**

## MACRO GRACEY

Standard model's long working end combined with mini model's longer lower shank. Excellent reach interdentally in deep pockets.

### Macro Gracey 5/6

- For incisors and premolars
- Especially useful in proximal surfaces

<b>LM</b> ErgoSense®	LM 205-206AF ES
<b>LM</b> ErgoSense®	LM 205-206AF EST
<b>LM</b> ErgoMax™	LM 205-206AF XSI
<b>LM</b> ErgoNorm™	LM 205-206AF SI

### Macro Gracey 7/8

- For premolars and molars
- For buccal, mesial and lingual surfaces

<b>LM</b> ErgoSense®	LM 207-208AF ES
<b>LM</b> ErgoSense®	LM 207-208AF EST
<b>LM</b> ErgoMax™	LM 207-208AF XSI
<b>LM</b> ErgoNorm™	LM 207-208AF SI

### Macro Gracey 11/12

- For premolars' and molars' mesial surfaces

<b>LM</b> ErgoSense®	LM 211-212AF ES
<b>LM</b> ErgoSense®	LM 211-212AF EST
<b>LM</b> ErgoMax™	LM 211-212AF XSI
<b>LM</b> ErgoNorm™	LM 211-212AF SI

### Macro Gracey 13/14

- For premolars' and molars' distal surfaces

<b>LM</b> ErgoSense®	LM 213-214AF ES
<b>LM</b> ErgoSense®	LM 213-214AF EST
<b>LM</b> ErgoMax™	LM 213-214AF XSI
<b>LM</b> ErgoNorm™	LM 213-214AF SI

## RIGID GRACEY

Blade shank thicker and more rigid, and working end slightly wider than in the standard model. Permits the use of greater pressure.

### Rigid Gracey 1/2

- For incisors and premolars

<b>LM</b> ErgoSense®	LM 201-202R ES
<b>LM</b> ErgoSense®	LM 201-202R EST
<b>LM</b> ErgoMax™	LM 201-202R XSI
<b>LM</b> ErgoNorm™	LM 201-202R SI

### Rigid Gracey 7/8

- For premolars and molars
- For buccal, mesial and lingual surfaces

<b>LM</b> ErgoSense®	LM 207-208R ES
<b>LM</b> ErgoSense®	LM 207-208R EST
<b>LM</b> ErgoMax™	LM 207-208R XSI
<b>LM</b> ErgoNorm™	LM 207-208R SI

### Rigid Gracey 11/12

- For premolars' and molars' mesial surfaces

<b>LM</b> ErgoSense®	LM 211-212R ES
<b>LM</b> ErgoSense®	LM 211-212R EST
<b>LM</b> ErgoMax™	LM 211-212R XSI
<b>LM</b> ErgoNorm™	LM 211-212R SI

### Rigid Gracey 13/14

- For premolars' and molars' distal surfaces

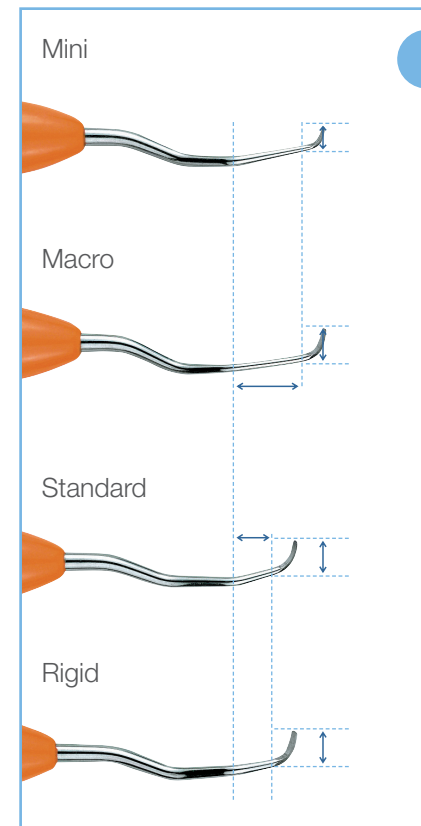
<b>LM</b> ErgoSense®	LM 213-214R ES
<b>LM</b> ErgoSense®	LM 213-214R EST
<b>LM</b> ErgoMax™	LM 213-214R XSI
<b>LM</b> ErgoNorm™	LM 213-214R SI

### Rigid Gracey 15/16

- For molars' mesial surfaces
- Blade shank more sharply angulated than in Gracey 11/12 for better access

<b>LM</b> ErgoSense®	LM 245-246R ES
<b>LM</b> ErgoSense®	LM 245-246R EST
<b>LM</b> ErgoMax™	LM 245-246R XSI
<b>LM</b> ErgoNorm™	LM 245-246R SI

## The types of Gracey curettes:





### MESIAL-DISTAL GRACEY

Combining a mesial and a distal working end in one instrument. Useful when treating one quadrant at a time.

All mesial-distal Gracays have code rings that make it easy to identify which working end is mesial and which distal.



#### Gracey 11/14

- LMErgoSense®** LM 211-214 ES
- LMErgoSense®** LM 211-214 EST
- LMErgoMax™** LM 211-214 XSI
- LMErgoNorm™** LM 211-214 SI

#### Gracey 12/13

- LMErgoSense®** LM 212-213 ES
- LMErgoSense®** LM 212-213 EST
- LMErgoMax™** LM 212-213 XSI
- LMErgoNorm™** LM 212-213 SI

#### Gracey 15/18

- LMErgoSense®** LM 245-248 ES
- LMErgoSense®** LM 245-248 EST
- LMErgoMax™** LM 245-248 XSI
- LMErgoNorm™** LM 245-248 SI

#### Gracey 16/17

- LMErgoSense®** LM 246-247 ES
- LMErgoSense®** LM 246-247 EST
- LMErgoMax™** LM 246-247 XSI
- LMErgoNorm™** LM 246-247 SI

### MINI MESIAL-DISTAL GRACEY

Mini models have longer lower shank and smaller working end than the standard model. Functions well in deep narrow pockets.

#### Mini Gracey 11/14

- LMErgoSense®** LM 211-214M ES
- LMErgoSense®** LM 211-214M EST
- LMErgoMax™** LM 211-214M XSI
- LMErgoNorm™** LM 211-214M SI

#### Mini Gracey 12/13

- LMErgoSense®** LM 212-213M ES
- LMErgoSense®** LM 212-213M EST
- LMErgoMax™** LM 212-213M XSI
- LMErgoNorm™** LM 212-213M SI

#### Mini Gracey 15/18

- LMErgoSense®** LM 245-248M ES
- LMErgoSense®** LM 245-248M EST
- LMErgoMax™** LM 245-248M XSI
- LMErgoNorm™** LM 245-248M SI

#### Mini Gracey 16/17

- LMErgoSense®** LM 246-247M ES
- LMErgoSense®** LM 246-247M EST
- LMErgoMax™** LM 246-247M XSI
- LMErgoNorm™** LM 246-247M SI

### MACRO MESIAL-DISTAL GRACEY

Macro models have standard model's long working end combined with mini model's longer lower shank. Excellent reach interdentally in deep pockets.

#### Macro Gracey 11/14

- LMErgoSense®** LM 211-214AF ES
- LMErgoSense®** LM 211-214AF EST
- LMErgoMax™** LM 211-214AF XSI
- LMErgoNorm™** LM 211-214AF SI

#### Macro Gracey 12/13

- LMErgoSense™** LM 212-213AF ES
- LMErgoSense™** LM 212-213AF EST
- LMErgoMax™** LM 212-213AF XSI
- LMErgoNorm™** LM 212-213AF SI

